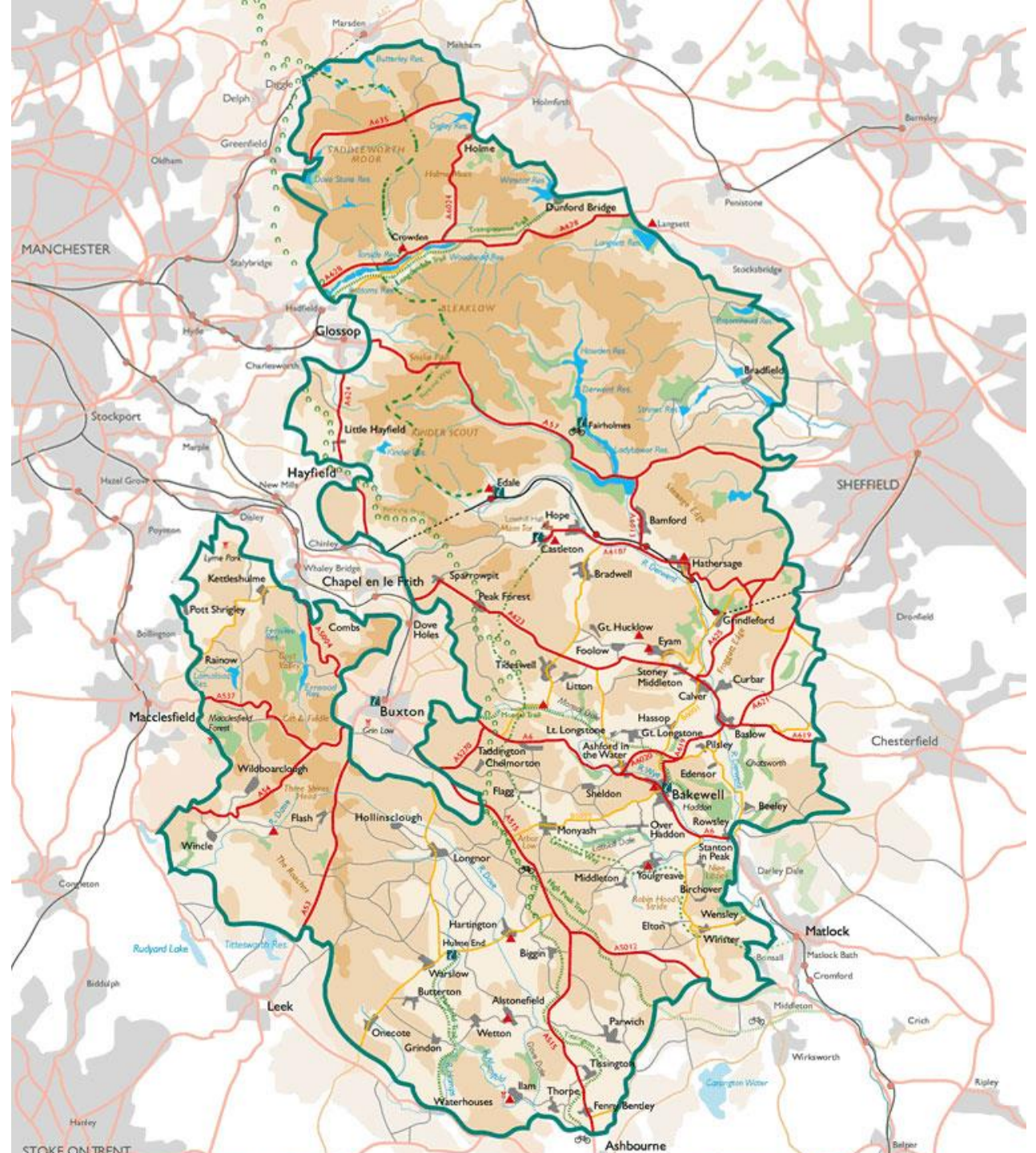


A group of four people are hiking on a dirt path through a lush green forest. In the foreground, a woman in a purple jacket and maroon leggings walks towards the left, holding a smartphone. Behind her, a woman in a red jacket and blue hat walks. To the right, a woman in a pink polka-dot jacket and blue cap walks, pointing her right arm towards the upper right. In the background, a man in a blue jacket and brown hat walks. The scene is filled with dense green foliage and trees.

Visit the Peak District by Train

The Peak District National Park

- Resident population 38,000
- Annual visitors 13.25 million- one of the most popular National Parks in the UK.
- Around 80% come by car
- An estimated 20 million people live within 1 hour's drive of the National Park.
- 79% of visits are day visits rather than overnight.
- Around 66% are repeat visitors (more than once a month)
- More than half come from Greater Manchester and South Yorkshire areas



Home Page



Travel by train with confidence. [Click here to visit the Northern Rail website for further information >](#)



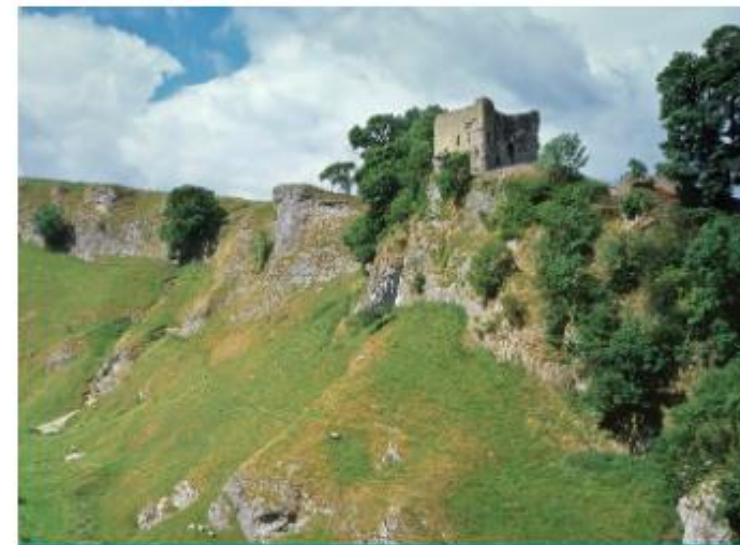
TICKETS & TIMETABLES

View the latest train timetables for the Manchester to Sheffield Hope Valley Line, the Manchester to Buxton Line, the Manchester to Glossop Line and find out about local bus services in the Peak District.



GREAT THINGS TO DO

Visit the Peak District for walking, cycling, rock-climbing, hang-gliding, fishing, photography, arts & crafts, cuppa and a cake at a friendly café or lunch at a country pub or dinner....



BRILLIANT PLACES TO GO

Find out about all the delightful, historic, towns and villages in the Peak District and surrounding areas, which you can easily get to by train...



BUXTON LINE

- [Buxton >](#)
- [Dove Holes >](#)
- [Chapel en le Frith >](#)
- [Whaley Bridge >](#)
- [Furness Vale >](#)
- [New Mills Newtown >](#)
- [Disley >](#)



GLOSSOP LINE

- [Glossop >](#)
- [Dinting >](#)
- [Hadfield >](#)



HOPE VALLEY LINE

- [Dore & Totley >](#)
- [Grindleford >](#)
- [Hathersage >](#)
- [Bamford >](#)
- [Hope >](#)
- [Edale >](#)
- [Chinley >](#)
- [New Mills Central >](#)

| | | | | | |
|---------------------------------|--|--|--|--|--|
| MONTH | AUGUST | | | | |
| WEEK BEG | 2 | 9 | 16 | 23 | 30 |
| CRN campaigns | CRN/Scenic Britain #DaysOutByRail | | | | |
| Themes | SUMMER HOLIDAYS, GO LOCAL, DAYS OUT | | | | |
| Audience | families | | | | |
| key dates | | | | Sheffield Safety Week | Bank Holiday |
| website | Days Out By Rail article | | | | |
| facebook- pick from web article | Off the Beaten Track, Bamford. HV Explorer competition | Spectacular Views- Edale, Glossop, Snake X57 bus | Reconnecting with Family- Buxton, Dore and Totley, HV Explorer competition | Purse Friendly Days out- Grindleford, New Mills, Backtrack competition | Doorstep Discovery- Whaley Bridge, Glossop |
| press release | Days out By Rail | | | | |
| events | | 11th PDNP Heather Wonderland Walk Hathersage station | Buxton Flowerpot Trail | Goyt Beer and Spirit Festival Whaley Bridge | 4th Transpeak Chinley Circular |
| | | 14th PDNP Mindfulness Walk Gford stn | Buxton Cinema | 21st Transpeak Crowden Circular Hadfield Stn | |
| | | | Discover Buxton Tours | 20th Lego Robotics Taster session 10-16 years Buxton | |



Peak District Days Out By Rail

This summer you can make great family holiday memories together in the High Peak and Hope Valley. Make a train journey part of your day out and keep the costs low by exploring family-friendly outdoor places.

Days Out By Rail summer campaign

Linking to social media



Ready for adventure? The Hope Valley Explorer bus starts tomorrow!
Check out this animation - will Bamford be your first stop?



www.peakdistrictbytrain.org
Visit the Peak District by

Learn More



There are so many places to visit by rail in the High Peak and Hope Valley this summer. We've made a few suggestions for fun-filled, family days out- why not have a look and make a train journey part of your summer adventures bucket list? #DaysOutByRail #CommunityRail #ScenicBritain



peakdistrictbytrain.org
Days Out By Rail-
Summer 2021 - Visit the

Learn More



Car-Free Peak District a step closer thanks to Northern

Train operator, Northern, is helping take even more cars off the road across the Peak District this year. The new service will take passengers through the Hope Valley.

RECENT NEWS

[Keeping You on Board](#)

[Buxton volunteer group scoop national awards for outstanding projects engaging community with local station](#)

[2020/21 Annual Report](#)

[Disruption on late services week beg. 08/11](#)

[Keeping You On Board](#)

CATEGORIES

[Annual Reports](#)

[Community](#)

Images are key



A person with curly hair, wearing a purple jacket, blue jeans, and green sneakers, is sitting on a large, mossy rock. They are looking off to the side with a smile. The background features a landscape with purple heather and a cloudy sky with soft, colorful light.

Analytics

Days Out By Rail summer campaign:

- Website visitors: **1177**
- Top pages visited: 1. Home page; 2. Hope Valley Line; 3. Contact; 4. Walking; 5. About the CRP
- Highest numbers of visitors to the website on any given day: **41** (16 Aug).
- Facebook campaign **reached 3932** and **engaged 250** (liked/commented/shared)

Next steps...

- Marketing Co-ordinator contract
- Review and streamline web content
- Build web and social media visitor numbers

