

# Working together towards a greener Anglia



Essex & South Suffolk  
Community Rail Partnership



greateranglia



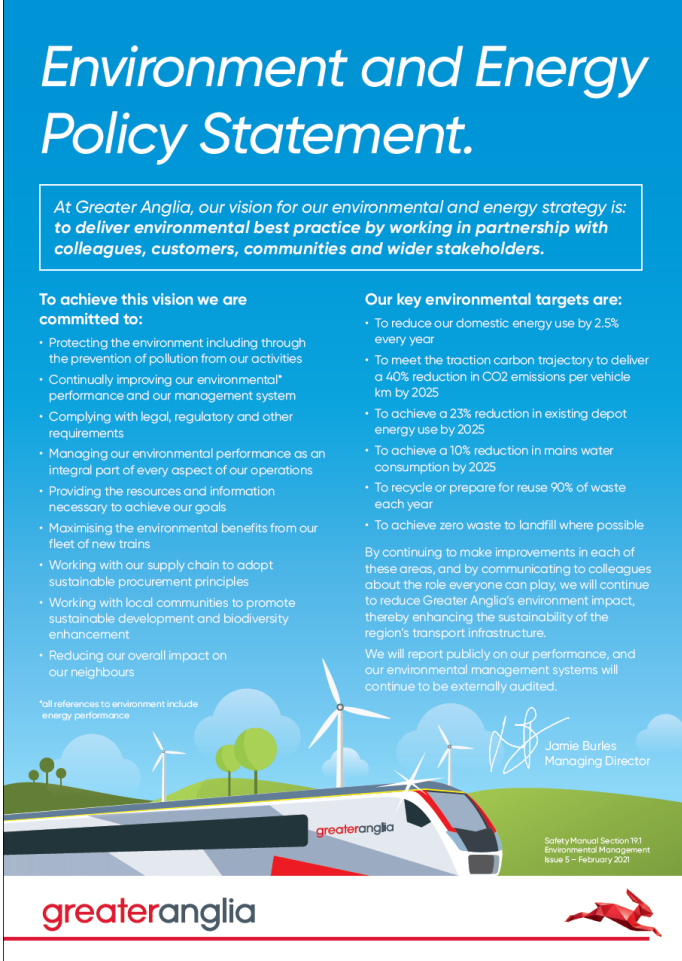


and habitats for wildlife at Greater Anglia stations.



# Environment and Energy Policy

- We are committed to:
- Protecting the environment
- Continually improving our environmental and energy performance
- Maximizing the environmental benefits of our new trains
- **Working with local communities to promote sustainable development and biodiversity enhancement**



*Environment and Energy Policy Statement.*

*At Greater Anglia, our vision for our environmental and energy strategy is: to deliver environmental best practice by working in partnership with colleagues, customers, communities and wider stakeholders.*

**To achieve this vision we are committed to:**

- Protecting the environment including through the prevention of pollution from our activities
- Continually improving our environmental performance and our management system
- Complying with legal, regulatory and other requirements
- Managing our environmental performance as an integral part of every aspect of our operations
- Providing the resources and information necessary to achieve our goals
- Maximising the environmental benefits from our fleet of new trains
- Working with our supply chain to adopt sustainable procurement principles
- Working with local communities to promote sustainable development and biodiversity enhancement
- Reducing our overall impact on our neighbours

**Our key environmental targets are:**

- To reduce our domestic energy use by 2.5% every year
- To meet the traction carbon trajectory to deliver a 40% reduction in CO2 emissions per vehicle km by 2025
- To achieve a 23% reduction in existing depot energy use by 2025
- To achieve a 10% reduction in mains water consumption by 2025
- To recycle or prepare for reuse 90% of waste each year
- To achieve zero waste to landfill where possible

By continuing to make improvements in each of these areas, and by communicating to colleagues about the role everyone can play, we will continue to reduce Greater Anglia's environment impact, thereby enhancing the sustainability of the region's transport infrastructure.

We will report publicly on our performance, and our environmental management systems will continue to be externally audited.

\*all references to environment include energy performance

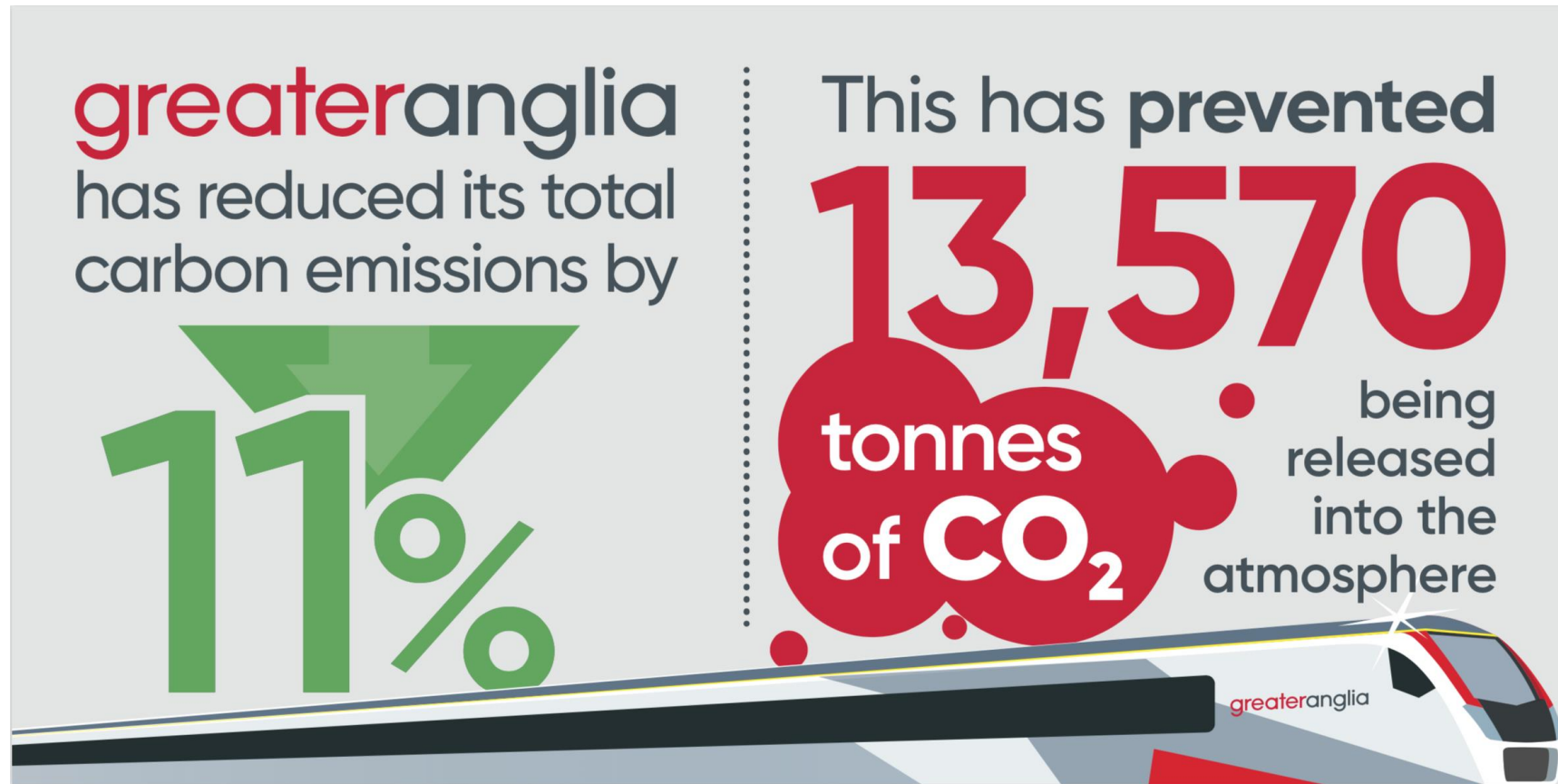
Signature of Jamie Burles  
Jamie Burles  
Managing Director

greateranglia

Safety Manual Section 101  
Environmental Management  
Issue 5 – February 2021



# Environment and Energy Policy contd





# Environmental Targets

We are working towards targets to:

- To reduce domestic energy use by 2.5% every year
- To meet traction energy targets to reduce CO2 emissions per vehicle km by 40% by 2025
- To recycle or prepare for reuse 90% of waste each year
- To achieve zero waste to landfill



# Management System



*“Whilst energy and carbon management continues to be at the core of the business strategy, some impressive work on sustainability and biodiversity was demonstrated through activities of the Station Adopters programme”*

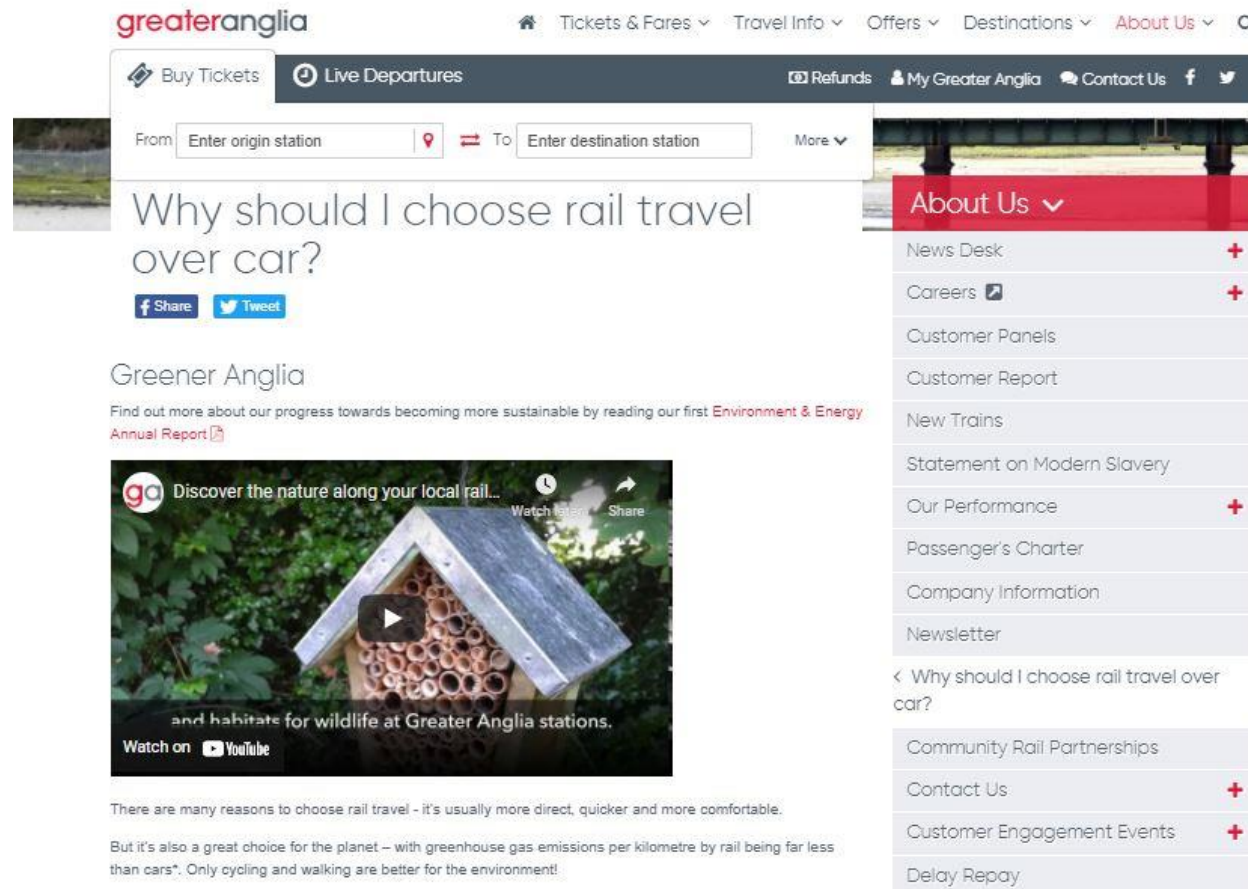




# The railway has a great story to tell



# Sustainability is a big theme this year



The screenshot displays the Greater Anglia website interface. At the top, the 'greateranglia' logo is on the left, and a navigation bar contains links for 'Tickets & Fares', 'Travel Info', 'Offers', 'Destinations', and 'About Us'. Below this, a secondary bar includes 'Buy Tickets', 'Live Departures', 'Refunds', 'My Greater Anglia', and 'Contact Us'. A search icon is also present.

The main content area features a search bar with 'From' and 'To' fields, followed by a large article titled 'Why should I choose rail travel over car?'. The article includes social media share buttons for Facebook and Twitter. Below the title, the section is headed 'Greener Anglia' and contains a link to the 'Environment & Energy Annual Report'. A video player is embedded, showing a wooden birdhouse with the text 'Discover the nature along your local rail...' and 'and habitats for wildlife at Greater Anglia stations.'.

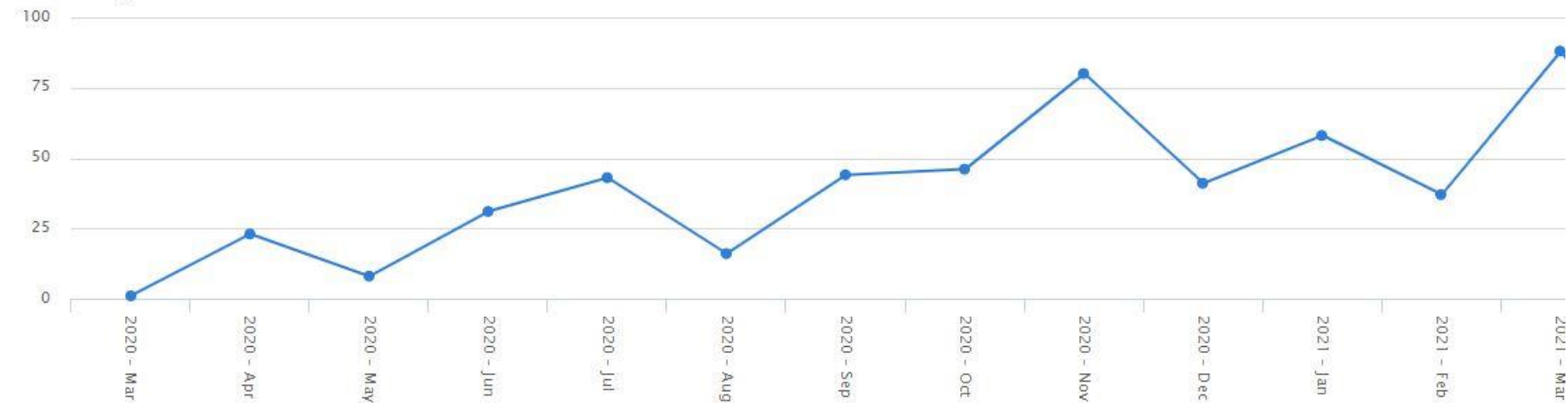
To the right of the main content is a red 'About Us' dropdown menu. It lists various links: 'News Desk', 'Careers', 'Customer Panels', 'Customer Report', 'New Trains', 'Statement on Modern Slavery', 'Our Performance', 'Passenger's Charter', 'Company Information', and 'Newsletter'. Below this menu, a link to the 'Why should I choose rail travel over car?' article is shown. At the bottom of the menu, there are links for 'Community Rail Partnerships', 'Contact Us', 'Customer Engagement Events', and 'Delay Repay'.



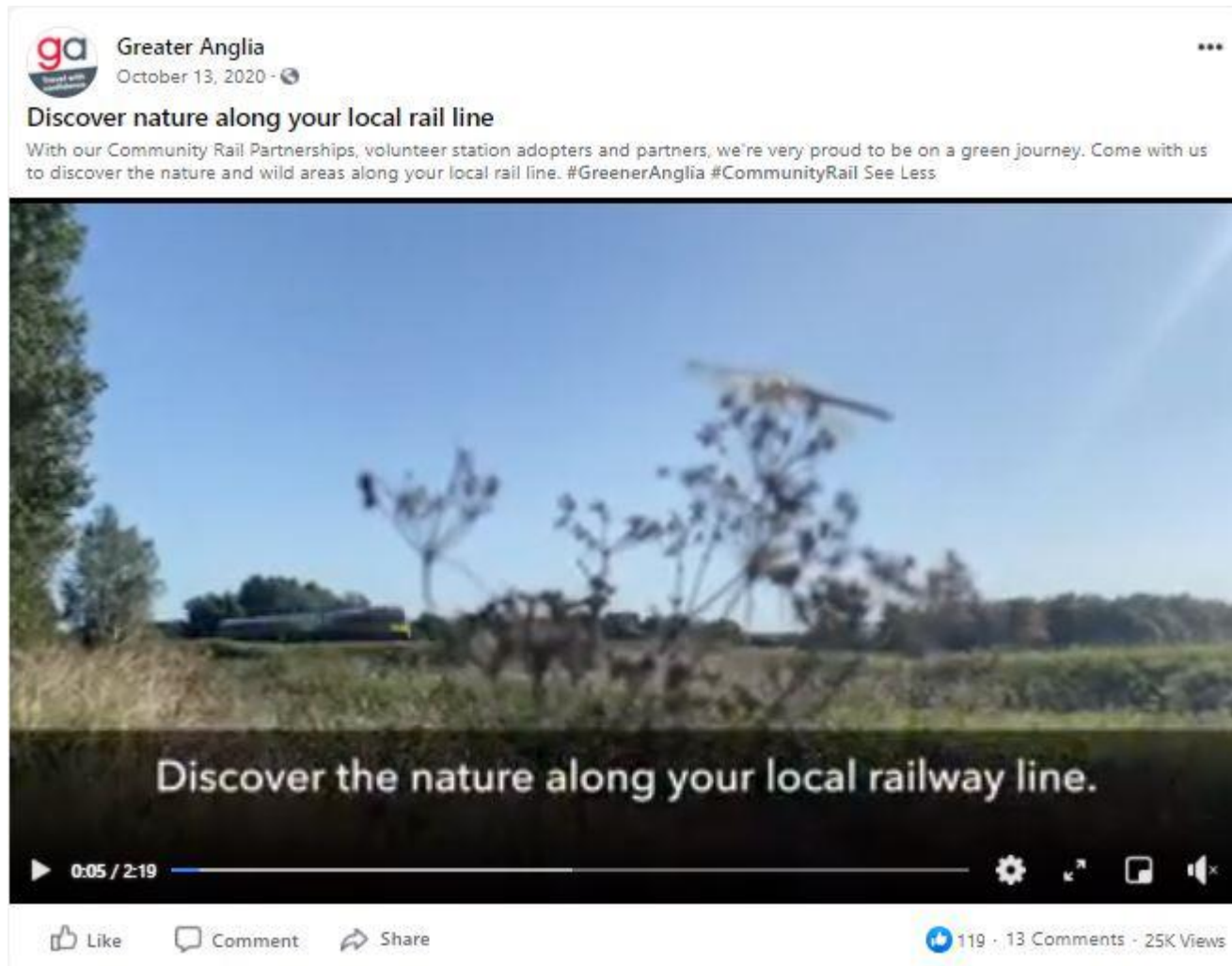


# 'Green' news is gathering momentum

News by Month



# Joint Facebook promotion





# Wildlife Friendly Stations campaign



# Wildlife Friendly Stations audit results

---

- Adopters increased the total area of station garden by 14% between 2019 and 2020.
- In total 6,400 square metres of railway land has been transformed.
- Our station gardens support over 200 different species of flora and fauna.





# Gardens pledged to WildEast



# Switch it off at level crossings campaign





# Spread the good news

---

- **66% of the UK population is on Facebook.**
- Build an audience on your page by posting regular, interesting updates and nice pictures.
- Ask partners to share your posts to reach even more people.
- Post in local groups and provide a link to your page to attract more followers.



# Recent coverage for our campaigns



Nearly 370,000 plastic bottles saved from oceans and landfill thanks to Greater Anglia customers



Greater Anglia works with the Carbon Trust towards an even greener future for rail in East Anglia





# We can achieve more together



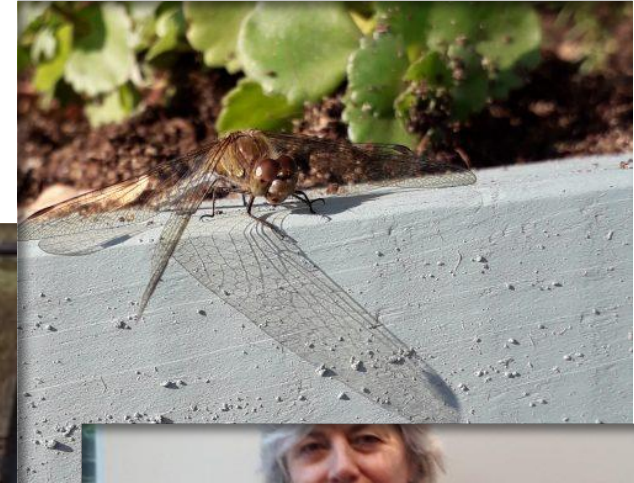
# Essex and South Suffolk CRP

- **The Bee Friendly Trust**
- **Alresford Station**
- **Great Bentley Station**
- **Clacton Station**
- **Mistley Station**
- **Mens shed bugs hotel and bird boxes**





# Alresford Station Project





# Providing Homes for Birds and Bugs





# Water Solutions





# Planned for 21/22

- Living Roofs
- Living walls
- Herb Gardens
- Large Bugs Hotel

