



Community rail is a growing movement comprising 75 community rail partnerships and 1,300 volunteer groups across England, Scotland and Wales that help communities get the most from their railways.

The community rail movement is uniquely placed to support a new era of rail that is passenger-focused, locally responsive and aligned with social, environmental and economic objectives.

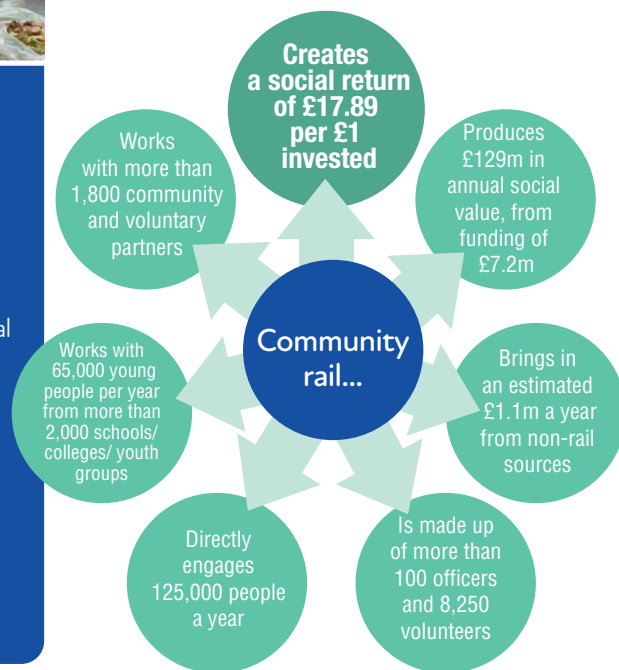
Policy should champion collaborative, community-minded approaches – welcoming local voices, ideas, and innovation. If Great British Railways aims to truly deliver for passengers, it must work hand-in-hand with communities.

Community rail, and its strong, well-established network for engaging underrepresented voices, can support and facilitate this step change.

To find out more, go to [communityrail.org.uk](https://communityrail.org.uk)



Find your local community rail partnership and/or station group via our map of members, scan the above QR code for details.





## Integrated and sustainable transport

Community rail promotes healthier, greener station access and the shift to more sustainable transport.

National policy must prioritise integration – linking public, community, shared and active travel, while reducing car dependency. A place-based approach is essential, enabling local leaders and communities to create joined-up, affordable networks that meet local needs and drive climate-friendly, inclusive change.



## Station buildings and land

Community rail can transform disused station buildings and land into thriving community assets. Yet many groups face barriers navigating a complex and fragmented system.

A clear, consistent national framework is needed – supporting community-led initiatives and valuing social impact equally with commercial priorities – ensuring all our stations are welcoming places embedded in the heart of communities.



## Accessibility and inclusion

Community rail helps remove barriers to rail travel for disabled people and marginalised groups – like young people and those on low incomes.

National policy must centre lived experience, embracing a pan-disability, access-for-all approach. Creative and interactive engagement should empower communities to co-design inclusive solutions that build trust, ownership, and lasting confidence in the railway.



## Rail reform and devolution

Community rail provides vital grassroots insight into transport planning. For meaningful outcomes, it must be engaged early and consistently.

As local bodies, such as England's Strategic Mayoral Authorities, gain more transport powers, they should adopt clear strategies and designate lead contacts to embed collaboration with community rail in shaping effective, locally responsive rail development.