

Eduardo Paolozzi

(1924-2005)

Buxton Museum,
Terrace Road.

Italian/Scottish artist, sculptor and a 'father of 1950's British pop art.' Eduardo totally transformed his approach to art after a life-changing insight when reading a book at Terrace Road library (now Buxton Museum, well worth a visit when open). It triggered him to blend a classical approach with childhood imagery, creating a unique artistic style.

7.



Walton Newbold

(1888-1943)

47 Dale Road.

Moving here as a teenager, Walton studied at Buxton College before studying politics at Manchester University. Disillusioned with Labour, he joined the Communist Party. In 1922, he was elected as Britain's first communist Member of Parliament, for Motherwell in Scotland, but lost his seat just over a year later.

9.



Elizabeth Spriggs

(1929-2008)

Ivy Cottage, Torr St,
now part of the Queen's Head
Hotel & public house

Born in Buxton, in her teens Elizabeth moved to Coventry with her family. She then pursued her dream of becoming an actor. Appearing on stage, and later on TV many times in the 1970s, she never quite cracked fame – her face was well-known, but not her name. However, she did appear in the first two Harry Potter films!

8.



Frank Soo

(1914-1991)

11 Lightwood Road.

Frank is the only man of Chinese heritage to play football for England, making 9 appearances. In the late 1930's, he captained the Stoke City team that included Stanley Matthews. He was born at 11 Lightwood Road (formerly 17 Victoria Terrace.) Until 1918, his parents, Quan and Beatrice Soo, ran a laundry at the house.

10.



What3Words addresses for each numbered location.

- | | |
|------------------------------|------------------------------|
| 1. easygoing.squish.unsigned | 6. operation.dips.firming |
| 2. impulses.behalf.provider | 7. uplifting.firewall.flank |
| 3. splashes.among.fanfare | 8. mainly.choppy.tiger |
| 4. stored.tonality.lower | 9. referral.cover.taxed |
| 5. timing.stability.smarting | 10. recoup.diamond.positives |



This is one in a series of Trail leaflets leading from Buxton Station to some of the interesting parts of town.

Look out for the Rail Ale Trail
and Rail Retail Trail.

This leaflet was inspired by, contributed to and edited by Debbie Fox and Julian Cohen.

FoBS are grateful for extracts taken from Julian's book 'Surely not in Buxton!'

The book is sold entirely in support of local charity, Buxton Civic Association.
Please support their work by buying a copy.
It is widely available in Buxton.

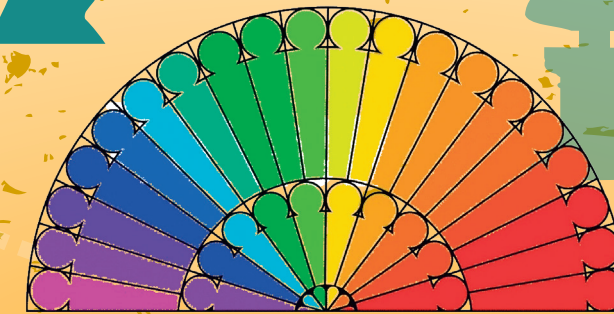
Any inaccuracies are the fault of FoBS,
please forgive them!

Friends of Buxton Station
(FoBS), 29 December 2023

Published Feb 2024.



Where possible, permission to publish these accompanying photographs has been sought. It is not our intention to infringe any copyrights with images taken from the internet and hope that the educational value shows that.



Unhailed Trail

a route around Buxton's
lesser-known influencers



Unhailed Trail

This leaflet will guide you around homes and buildings associated with some of Buxton's lesser-known or 'unhailed' folk. Historians may have overlooked all but a couple of them, but they were all important and/or quietly influential.

Samuel Turner

(1803-1876)
Turner's Memorial,
The Crescent.

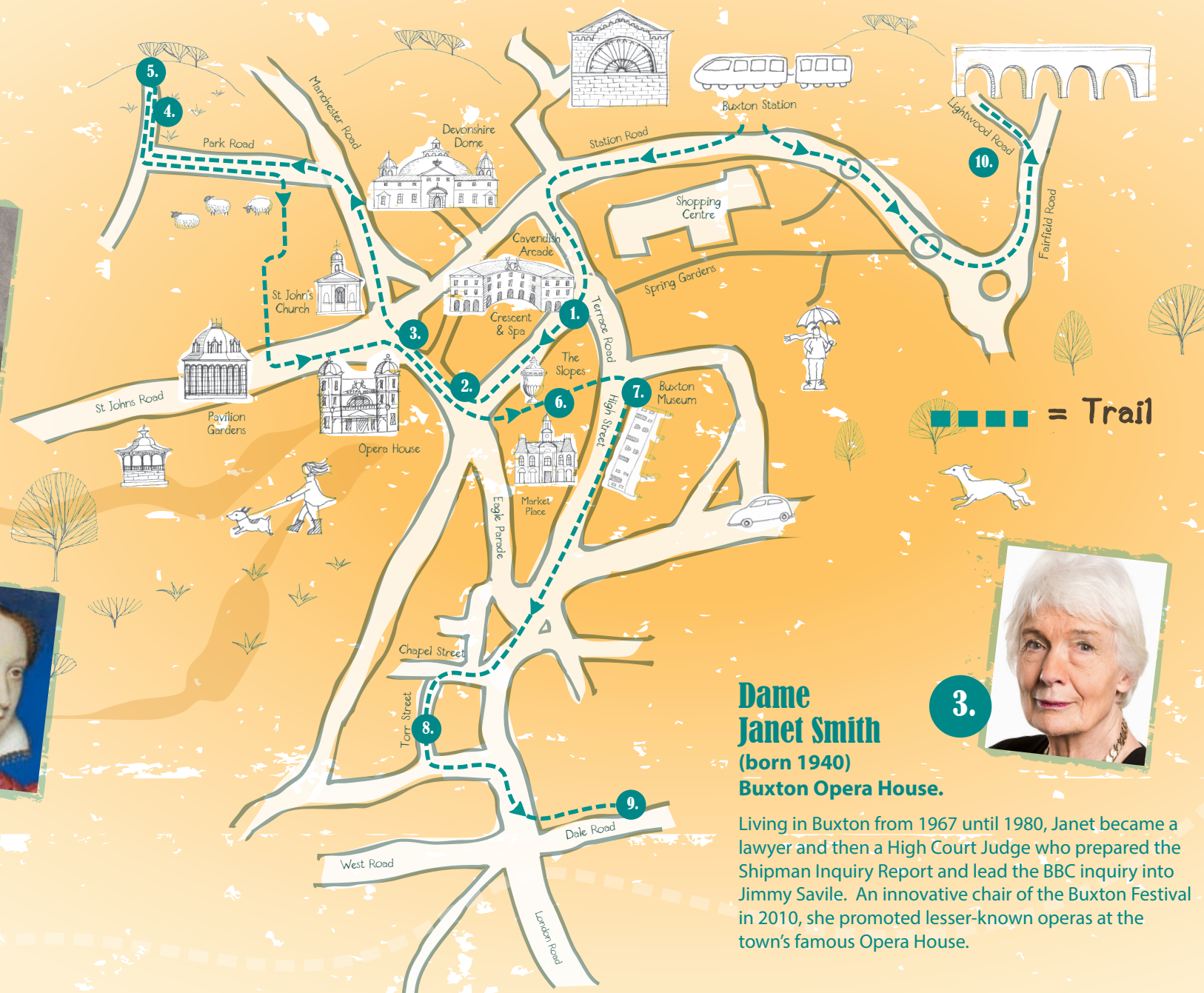
Revered by FoBS as the person 'most responsible for bringing trains to Buxton.' Samuel was a great friend to the town's people, as you can read on the carvings of his Memorial. Agent for major landowner, the 7th Duke of Devonshire, he led a relatively modest family life amongst railway workers.



Mary, Queen of Scots

(1542-1587)
Old Hall Hotel,
The Square/Crescent.

The most famous of our 'unhailed.' Mary was always heavily guarded when staying on several occasions between 1573 and 1584 at the Old Hall, before being beheaded in 1587. She is said to have liked Buxton and strongly petitioned her captor, Queen Elizabeth I, to allow further visits for the good of her health.



Dame Janet Smith

(born 1940)
Buxton Opera House.

Living in Buxton from 1967 until 1980, Janet became a lawyer and then a High Court Judge who prepared the Shipman Inquiry Report and lead the BBC inquiry into Jimmy Savile. An innovative chair of the Buxton Festival in 2010, she promoted lesser-known operas at the town's famous Opera House.



Vera Brittain

(1893-1970)
'Melrose', 151 Park Road.

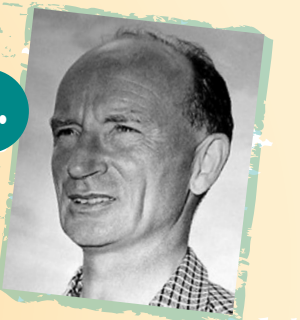
The famous pacifist, socialist, feminist, poet and novelist lived at 'Melrose' between 1904 and 1915. Vera's best-known work, 'Testament of Youth,' was published in 1933. It is a memoir of the lost generation caused by the First World War and helped form her strongly held pacifist beliefs.



Robert Stevenson

(1905-1986)
'Rockwood', 137 Park Road.

Born in Buxton and as a child living at 'Rockwood,' Robert later moved to America to become an innovative film director, blending fantasy with live action. He directed famous Walt Disney movies, including Mary Poppins and Bed Knobs & Broomsticks and worked with Hollywood's stars, such as Orson Welles, Paul Robeson, Jane Russell, Victor Mature and Ava Gardner.



Edith Winifred Pilkington

(1899-1987)
Weather Station, The Slopes.

Daughter of William Pilkington, Edith followed in her father's footsteps as 'the town's Chemist and weather man.' In 1924, she became the UK's first female Borough Meteorologist, a role she performed by taking measurements at the Weather Station on The Slopes nearly every day until 1962.

