

Celebrating outstanding achievement in community rail



2026 COMMUNITY
RAIL AWARDS

Winners'

SHOWCASE

ORGANISED BY



HEADLINE SPONSOR







Introduction

Our Community Rail Awards stand as a national celebration of the exceptional work taking place across England, Scotland and Wales to strengthen the relationship between railways and the communities they serve. These awards highlight the partnerships and initiatives that show how community-led innovation improves lives, enriches local places and supports wider social, environmental and economic goals.

This winners' showcase shines a spotlight on the projects and partnerships that have been awarded or highly commended this year.

From building travel confidence and promoting greener journeys to transforming stations and championing diversity, each initiative contributes to a more inclusive and vibrant railway. Together, they demonstrate how rail can act not only as a means of travel, but as a catalyst for connection, opportunity and positive change.

Following the celebrations of Railway 200, marking two centuries of railway innovation, we now look ahead with renewed purpose. Community rail plays a vital role in carrying this legacy forward, ensuring our railways continue to evolve in ways that reflect local needs, support national ambitions and deliver real benefits for people and places.

Our sincere thanks and congratulations go to everyone involved in the initiatives featured in this showcase. These achievements show the strength of partnership and the importance of keeping communities at the heart of the railway's future.

Jools Townsend

Chief Executive, Community Rail Network

Get in touch with us to explore partnership, sponsorship, and engagement opportunities for future Community Rail Awards events@communityrail.org.uk | www.communityrail.org.uk/awards

Contents

Involving Children & Young People	4
Empowering Diverse Groups	6
Community Creative Projects & Station Arts	8
Small Projects Award	10
Most Effective Communications Campaign	12
Best Community Engagement Project	14
Tourism & Leisure Award	16
Photo Competition	18
Influencing Postive Change & Sustainability	21
Most Enhanced Railway Spaces	23
It's Your Station	25
Railway 200 Legacy Award	29
Outstanding Volunteer Contribution	32
Community Rail Network Board's Special Recognition Award	34
Outstanding Contribution to Community Rail	35



Meet our judges



Andy Savage MBE
Chair of Railway Heritage Trust



Anita David
Director of Community Engagement at Work Better Innovations



Brian Barnsley
Retired Community Rail Specialist



Clare Dowling
Behaviour Change and Sustainable Transport Specialist at Walk Wheel Cycle Trust



Dominic Lund-Conlon
Inclusive Transport Policy Specialist



Emma Roberts
Railway 200 Programme Manager



Erin Kelly
Communications and Marketing Officer at Community Rail Network



Jim Trotman
Retired Community Rail and Tourism Specialist



Mark Barker
Retired Railway Professional & Chair of Cheshire Best Kept Stations



Mike Lamport
Railway Heritage Advisor



Nicky Forsdike
Rail Industry Researcher & Lecturer



Paul Bigland
Rail Industry Photographer & Writer



Daniel Wright
Community Rail & Heritage Artefacts Specialist



Peter Roberts
Retired Community Rail Leader & Rural Transport Historian



Riona McMorrow
Head of Grants at Architectural Heritage Fund

Find out more about our judges here: www.communityrail.org.uk/awards

Involving Children & Young People

Sponsored by **LNER**
LONDON NORTH EASTERN RAILWAY

This category celebrates the vital role community rail plays in engaging and empowering children and young people.

It recognises projects that inspire confidence in using rail, support learning and life skills, encourage sustainable travel, and give young people a voice in shaping their local railways.

Shortlist

- North Notts & Lincs CRP & 7th Retford Scouts – 7th Retford Scouts Good Passenger Project
- Platform Rail - RailWAY
- Friends of Ore Station – Youth-Led Projects at Ore Station
- 6VT Youth CRP – Rail Explorers
- North Staffordshire CRP with East Midlands Railway & Cross Country Trains – Skills Builder Accelerate at Forest Park Primary School

FIRST

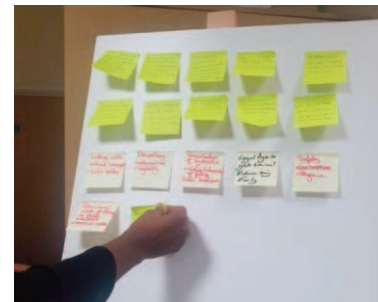
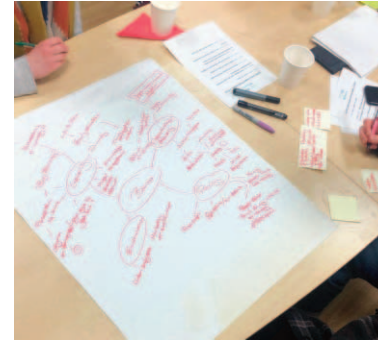
Gloucestershire and Oxfordshire Community Rail Partnership for Youth Transport Forum

Gloucestershire and Oxfordshire Community Rail Partnership (GOCRP) created the Youth Transport Forum to tackle the barriers young people face when accessing public transport and to give them a meaningful voice in shaping local transport.

Open to 16–25 year olds, the forum brought together 11 delegates for youth led workshops exploring key issues like accessibility, education and affordability. Together, they developed six creative solutions, including better cycle-bus integration and a new travel education curriculum. GOCRP also launched a Youth Transport Survey informed by the forum's insights, receiving an impressive 913 responses.

The forum's ideas and survey findings were brought together in GOCRP's 2025 Youth Transport Report, providing a powerful, evidence led snapshot of young people's priorities and the changes they want to see. The report was well received by stakeholders and featured in local media, including BBC Radio Gloucestershire, and is already driving momentum for more inclusive, accessible and youth centred transport planning across the region. Its insights are helping to shape forward thinking discussions, influence decision makers and inspire practical, future focused improvements in how young people move around their communities.

"An interesting project providing a youth voice, with great input from large numbers of young people, as well as great output in terms of the report and media engagement." Clare Dowling, judge



WORKSHOP 1
Brainstorming Session
Focus of following workshops decided (9 delegates)

WORKSHOP 2
Theme: Accessibility
Key barriers identified and solutions proposed (7 delegates)

WORKSHOP 3
Theme: Education
Key barriers identified and solutions proposed (6 delegates)

WORKSHOP 4
Theme: Cost/Affordability
Key barriers identified and solutions proposed (6 delegates)



Involving Children & Young People

SECOND

Bishop Line Community Rail Partnership, Northern and partners for Bishop Line Secondary Schools Rail Safety and Careers Event 2025

In response to an increase in youth trespass incidents around Darlington, Shildon and Newton Aycliffe during the school holidays, Bishop Line Community Rail Partnership worked with rail partners to design and deliver a two-day safety and careers event. A combination of rail safety talks, try the train trips and workshops engaged over 550 students aged 12-13 across four schools.



Post event feedback showed clear benefits for students: 97% reported a better understanding of how to stay safe around the railway, and 93% felt more aware of the training and career opportunities available in rail. Teachers and partners also offered valuable insights, which are now shaping the 2026 programme, including an extra careers workshop and an expanded offer for Year 10 (ages 14-15) students. Overall, the project strengthened awareness of rail safety, inspired interest in future careers, and deepened connections between young people, schools and the rail industry.



THIRD

Community Action New Forest and Young Carers with New Forest Community Rail Partnership for Travel Training: A Respite Day for Young Carers

New Forest Community Rail Partnership partnered with Community Action New Forest to give a group of young carers aged 14-18 a much-needed day of respite while building their confidence in using public transport. Led by the young people themselves, the group travelled by train, bus and ferry to the Isle of Wight's Needles Park, supported throughout by a South Western Railway Travel Ambassador providing guidance on journey planning, timetables and ticketing.

The experience boosted confidence and wellbeing, with young carers describing the day as "happy", "fun" and "like being a normal teenager". Staff also observed a clear increase in independence, with several participants since choosing to make journeys by public transport on their own, showing the profound impact that can be had for young people when they feel empowered to travel safely, confidently and independently.



Empowering Diverse Groups

2

Sponsored by **EMR**

This category celebrates projects that open doors, uplift underrepresented voices, and help people feel truly welcome on our railway. These initiatives inspire confidence, remove barriers, and show the powerful change that happens when communities are invited to thrive.

Shortlist

- Settle Carlisle Railway Development Company - Try the Train with Carlisle & Penrith Refugees
- Penistone Line Partnership with Artworks South Yorkshire and SYMCA - Sheffield Station Exhibition & Art Trail
- Community Rail Cumbria and the Adult Learning Team - Train with ESOL
- Oxfordshire CRP, MIMA and Oxfordshire County Council - Calm Spaces Report
- North Notts & Lincs CRP, Friends of Shireoaks and ArtWorks South Yorkshire - Shireoaks Station Mural

FIRST

Southeast Communities Rail Partnership with Optalis for Travel Ambassadors

Southeast Communities Rail Partnership's Travel Ambassadors initiative was created to help disabled people travel more independently by exploring public transport through their own lived experience. Co-designed with Optalis, a social care organisation supporting older people and adults with disabilities, the programme brought together five ambassadors to plan and complete rail journeys, assessing accessibility at every stage.

What made this a winning project was its genuinely person-led approach: the ambassadors acted as decision-makers, identifying barriers and proposing real, practical solutions. Their findings were turned into an accessible 'how to' guide written in their own voices, now helping other disabled travellers gain confidence and reassurance.

The impact was wide-reaching. The ambassadors developed new skills, independence and self-belief, while transport providers and attractions gained invaluable insight into how to make rail travel more inclusive. By elevating disabled people as experts and changemakers, the programme delivered meaningful, lasting change across the network.

"A standout project, engaging directly with disabled people, empowering them to share their experiences with others in an engaging and useful way." Clare Dowling, judge



Empowering Diverse Groups

SECOND

Gloucestershire Community Rail Partnership, Great Western Railway, Piper Holmes & Ella McLean for Exploring LGBTQIA+ Gloucestershire

This project empowered local communities by amplifying LGBTQIA+ voices and celebrating queer histories across Gloucestershire. Led by local LGBTQIA+ groups alongside Gloucestershire Community Rail Partnership, Great Western Railway, Pride in Gloucestershire and Gloucestershire Archives, the partnership uncovered stories ranging from 18th century records to modern Pride events. Through interactive mapping, surveys and conversations, more than 60 personal stories and travel insights were gathered and compiled into the Gloucestershire Queer History Map and Travel Needs Report, highlighting both the richness of queer life and the challenges of living and travelling in a semi rural county.



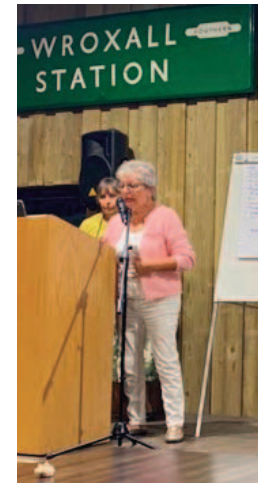
The impact was significant. A Pride Month exhibition at Cheltenham Station showcased the stories to thousands of everyday rail users, increasing visibility and understanding. The resources are now preserved at Gloucestershire Heritage Hub, ensuring long term access for the community and researchers. By documenting lived experiences and identifying travel barriers, the project has laid important groundwork for more inclusive transport planning and a stronger sense of connection for LGBTQIA+ people across the county.

THIRD

Fran Shelley & Helen Blake with Isle of Wight Community Rail Partnership for Suit Yourself: Free 12 Week Back to Work Course

This free 12 week course helps vulnerable women rebuild confidence and move closer to employment, combining personal development with practical skills such as communication, CV writing and mock interviews. Held in and around railway stations with transport passes provided, the programme also builds confidence in using public transport and introduces participants to further education opportunities through visits to Isle of Wight College.

More than 200 women have completed the course over the last six years, with many progressing into work, volunteering, education or starting their own businesses. Participants report increased confidence, new friendships and a renewed sense of self worth, showing the programme's lasting impact in empowering women and strengthening the community with the railway at its heart.



Community Creative Projects & Station Arts

3

Sponsored by **AVANTI WEST COAST**

This category celebrates creative projects that have empowered people, enriched local places, and strengthened connections with the railway and wider community. Entries are judged within three group sizes, large, medium, and small, to recognise achievements fairly based on available resources and highlighting a diverse range of impactful, community led creativity.

Shortlist

Large groups

- Oxfordshire CRP - Moving Murals
- The Billericay Men's Shed, T.I.M.E, Southend Museums & c2c Railway - Victory in Europe 80 with the Billericay Men's Shed (Dementia Support Group) Singers
- Friends of Ashurst New Forest Station, New Forest CRP, South Western Railway, CrossCountry & partners - Railway 200 mural

Small groups

- Greening Arundel and the Green Team with partners - Nature in Art: Art in Nature
- Friends of Buxton Station - Easy as ABC: A Bumblebee-Friendly Community
- Friends of Ore Station - The Street Art Project
- LonGBoaT Wakefield CIO - Wakefield Kirkgate Station Adoption
- Friends of Bishopstone Station CIC - Station Art and Photography for the Community

Medium groups

- Severnside CRP, Bath Welcomes Refugees - Our Home
- South East Lancashire CRP - Wonders of Wigan Mural
- East Suffolk Lines CRP - Chaos to Calm
- Co-Creative Connection - Celebrating Connection Through Co-Creative Community Rail Workshops
- Bishop Line CRP with Ann Cuthbert and Pam Plumb - Write on Track
- Severnside CRP, West of England Mayoral Combined Authority and Aumairah Hassan - Progression
- FACET March - Sunflower mosaic project
- White Cliffs CRP & Strange Cargo - Resident Platform Project
- Leeds-Morecambe CRP and St. Peter's C of E Primary School Heysham - Birds of the Bay

LARGE GROUP

Community Rail Lancashire with Arts2Heal for The Clitheroe Line: A Picturesque Railway Journey



This project created far-reaching impact for more than 50 neurodiverse and disabled adults by building confidence, reducing social isolation, and opening up rail travel in an accessible, empowering way.



By combining trips along the Clitheroe Line with creative workshops, participants developed new skills, formed friendships, and discovered meaningful ways to express themselves, often for the first time.

The project also strengthened community connections and left a lasting legacy, with participants' work showcased in a touring exhibition and featured in promotional materials for the line. This visibility celebrated their achievements while promoting greener travel and deepening appreciation for the heritage and landscape of the route.



Ultimately, the initiative helped individuals feel more connected, independent, and valued, transforming both personal wellbeing and local engagement.

"I really like the care and nurturing aspect towards the participants of this, which ended up with a smashing railway-themed art piece." Daniel Wright, judge

Community Creative Projects & Station Arts



MEDIUM GROUP

Thomas Pocklington Trust and Essex Sight Loss Council for Do You See What I See

Do You See What I See? earned the Medium Group award for its powerful blend of creative co production and meaningful accessibility advocacy. Working directly with blind and partially sighted (BPS) people, the project enabled participants to create tactile, braille and audio described artworks that expressed their personal experiences of sight loss. These pieces were exhibited at Colchester, Norwich and Broxbourne stations, allowing thousands of passengers to engage with inclusive, multi-sensory art in everyday travel spaces.



Alongside the creative work, the project opened up important dialogue with the rail industry. A launch day symposium gave BPS participants the opportunity to share lived experiences with transport leaders, helping influence ongoing accessibility improvements across the Greater Anglia network.



Judges praised the project's authenticity, strong partnerships and tangible impact. It not only empowered participants through accessible creativity but also broadened public understanding of sight loss and demonstrated how stations can become more welcoming, inclusive environments for all.

SMALL GROUP

Wokingham Learning Disability Partnership Board for Railway 200 Artwork

This project stood out for its inclusive approach to celebrating Railway 200 and showcasing the creativity of people with learning disabilities. Through tailored, accessible workshops with artist Jo Werrett, participants created individual railway track panels inspired by local heritage. Each person gained confidence, new skills, and opportunities to express themselves creatively in a supported environment.

Brought together into a vibrant artwork piece at Wokingham Station, the installation not only transformed the space but also elevated participants' visibility within the community. The public unveiling, and the recognition it generated, boosted self esteem, strengthened social connections, and helped challenge perceptions by showcasing the talent and creativity of those involved.

Judges highlighted how the project fostered pride, independence and a sense of belonging, making it a standout example of small group community impact.



Small Projects Award – Under £500

4

Sponsored by **HITACHI**

This category celebrates small, low cost projects that deliver exceptional value for money and bring clear benefits to the community through their connection to the railway.

Open to initiatives costing £500 or less, it covers a wide range of activity, from awareness raising and digital work to practical, hands on improvements.

Shortlist

- Barton Cleethorpes CRP - Try the Train Safely
- South East Lancashire CRP - Fingers in Many Pies Food Event
- Abbey Line CRP - Tales, Trails and Trains: Abbey Line CRP at Bricket Wood Armed Forces Day
- Community Rail Cumbria with Councillor Trisha Thomas - From Eye-sore to Eye-conic: Grange-over-Sands Gallery
- Southeast Communities Rail Partnership and Eastbourne Model Railway Society - Box End Green Model Railway

FIRST

Friends of Burton Joyce and Lowdham Station for Newark Brake Trials

This project marked the 150th anniversary of the Newark Brake Trials with an inspiring STEM event that engaged 40 local primary pupils in engineering, rail safety and future careers. Working with Primary Engineer, East Midlands Railway and local engineering students, the children explored the historic significance of the brake trials, toured the cutting edge Air and Space Institute, and took part in a hands on workshop to design and build their own model train carriages with working braking systems, delivered at remarkably low cost.

The judges praised the project for its exceptional educational value, strong partnerships and creativity, offering a free, high quality experience that made railway history and engineering exciting and accessible for young people. It also provided meaningful leadership opportunities for college students, strengthening inter generational learning and community connection.

The impact was clear: pupils gained confidence, practical skills and a deeper understanding of engineering and safety, while the success of the event has prompted the Air and Space Institute to express interest in making it an annual fixture, ensuring the project's benefits continue to grow year on year.

"A strong entry showing great collaboration with organisations not usually linked to community rail." Brian Barnsley, judge



Small Projects Award – Under £500

4

SECOND

TransWilts Community Rail Partnership for Wiltshire Bingo Trains

This low-cost high-impact project combined rail safety, education and fun to empower new rail users and help build confidence. For many students from Fairfield College and Brimble Hill School, it was their first ever train journey, made less daunting through bingo activities that reinforced classroom skills while teaching them how to navigate stations safely. With donated train tickets, refreshments from Great Western Railway and minimal spend on prizes, the project delivered exceptional value through partnership and creativity.

Its impact has already spread beyond schools, with the model successfully used to introduce refugees supported by Swindon Borough Council's 'Live Well' project to their local area. By making rail travel engaging, welcoming and easy to understand, the initiative has helped more people feel confident about future independent journeys.



THIRD

Kents Bank Station Library for The Pop-Up Station Buffet

The team at Kents Bank Station Library transformed an underused corner of the building into a simple, self serve pop up station buffet to offer a warm, welcoming refreshment spot for locals and visitors. Volunteers keep the space clean, stocked and inviting, with occasional donations of homemade cakes during community events adding an extra personal touch.

The response has been overwhelmingly positive, with visitors appreciating the free service and often choosing to donate to support the library. The buffet has helped increase footfall and further established Kents Bank Station as a friendly community hub, turning it into a destination where people come together, connect and feel at home.



Most Effective Communications Campaign

5

Sponsored by



This category shines a spotlight on standout communications that bring community rail to life.

It celebrates creative, well planned campaigns that raise awareness, generate buzz and clearly demonstrate their impact, whether through strong PR moments, powerful storytelling or measurable engagement across social media and beyond.

Shortlist

- Isle of Wight and New Forest CRP with The Riot Act - TravelSafe
- Settle Carlisle Railway Development Company - Things to Do on the Settle to Carlisle Line This Weekend

FIRST

Abbey Line Community Rail Partnership for From Rail to Reel: Celebrating the Abbey Line through Film

This creative film project showcased the heritage, character and community spirit of the Abbey Line while celebrating Railway 200 and raising awareness of the train service. Produced by local filmmaker Julie d'Adamo with support from London Northwestern Railway, the short video brought together station volunteers and CRP representatives, capturing authentic local voices across locations along the route.

Launched during Community Rail Week 2025 with a week long screening at The Odyssey Cinema, the film reached more than 2,400 cinemagoers and a further 12,500 people through social media and press coverage. Its professional production, engaging storytelling and coordinated multi channel promotion significantly strengthened the CRP's outreach and visibility.

Judges recognised the project for its creativity, reach and ability to inspire pride and interest in the Abbey Line. It not only deepened community connection but also set a strong foundation for future creative campaigns, demonstrating the power of film to promote rail travel in an accessible and engaging way.



"An impressive project raising awareness of community rail and Railway 200, achieving wide reach and excellent social media engagement." Jim Trotman, judge

Most Effective Communications Campaign

5

SECOND

Gloucestershire Community Rail Partnership for The Story Express

This initiative, created in partnership with Aurora Children's Theatre and funded by CrossCountry, used creative storytelling to help families feel more confident using local rail services. Nearly 30 young people developed geo located audio stories through summer workshops, which were premiered during a sold out launch event where families listened along on board the train. Many had travelled long distances to take part, and feedback showed a strong boost in local pride and confidence in using trains.



The project's impact was amplified through a coordinated communications campaign involving national press, BBC radio coverage, community outreach and social media promotion. Although small in scale, The Story Express reached far beyond its initial participants, raising the profile of community rail and demonstrating how creative, grassroots storytelling can make rail travel feel fun, accessible and inclusive for families.

THIRD

Southeast Communities Rail Partnership for Annual Review 2024-2025

Southeast Communities Rail Partnership refreshed its 2024-25 Annual Review to create a more engaging, socially focused publication. The new interactive report brought together case studies, infographics, photography and staff contacts, supported by a coordinated communications campaign across press, email, social media and stakeholder networks to maximise visibility and reach.



The revamped report has become a valuable tool for strengthening the partnership's profile, helping partners and the wider public understand the social impact of community rail in an accessible way. Its wide circulation, positive media coverage and use at rail and community events have all contributed to building Southeast Communities Rail Partnership's brand and generating strong, lasting engagement.

Best Community Engagement Project

6

Sponsored by RAIL SAFETY AND STANDARDS BOARD

This category celebrates projects that bring communities closer to their local railway. It showcases both standout one-off events and long term initiatives that respond to local needs, grow over time, and put community connection at the heart of community rail.

Shortlist

- Esk Valley Railway Development Company - Forget-Me-Not Dementia Train
- Friends of New Milton Station - Our First Year – A Whole Town Project
- Cambridge Sustainable Food CIC - The Travelling Garden
- Friends of Bitterne Station and Unexpected Places - Stories from the Station
- Kents Bank Station Library - Kents Bank Station Library
- The Community Brain CIC & New Malden Residents Association Station Adopters - 60 Years of Sound of Music Singalong
- Gloucestershire & Oxfordshire CRP - Connecting Communities

FIRST

Marston Vale Community Rail Partnership and Bedfordshire Rural Communities Charity for Rails to Roots at Ridgmont Station Heritage Centre

Rails to Roots started with inclusive gardening sessions run with Bedfordshire Rural Communities Charity (BRCC), offering local people the chance to learn, create and thrive outdoors. As the project grew, so did its ambition - introducing 'try the train' trips to build travel confidence, and offering supported volunteering roles that helped participants feel valued, capable and part of the community.



A wide range of partners contributed to transforming the station environment. Volunteers from Network Rail, London Northwestern Railway and East West Rail built raised beds and supported new planting, while the Friends group created a memorial rose garden and added wildlife friendly features that helped turn the station into a welcoming, vibrant outdoor space.

The judges praised the project for its inclusive approach, strong collaboration and thoughtful engagement. Participants gained confidence, new practical skills and the chance to connect socially, while the station itself became more attractive and better used by the community. With ongoing support through BRCC's social prescribing network, the project continues today, ensuring its positive impact endures and grows.



"This project not only wins hearts and minds but shows demonstrable impact through surveys and testimonials. There's a key target audience in mind who have been reached through the project. A standout project with measurable results." Clare Dowling, judge

Best Community Engagement Project

6

SECOND

Second: Devon & Cornwall Rail Partnership and the National Trust Cotehele for Tamar Valley Blossom Festival

The Tamar Valley Blossom Festival was developed to encourage communities to explore the Tamar Valley Line and connect with the natural environment. Running for two weeks in spring 2025, the festival featured 18 events, held across Plymouth's urban and rural communities, ensuring it was accessible to all. A supported 'try the train' trip helped refugees build confidence and connection through a shared art workshop, while discounted tickets for low income families and free entry to National Trust Cotehele for rail users removed financial barriers.



These efforts resulted in a 14% rise in journeys on the line, with festival videos reaching nearly 120,000 people and many participants reporting greater confidence in travelling by train. The festival also created lasting legacy, strengthening collaboration between Devon & Cornwall Rail Partnership and the National Trust and directly inspiring new initiatives such as 'Tea and Train'.



THIRD

Farnborough Street Residents Association for Farnborough North Community Hub

The Farnborough Street Residents Association has transformed Farnborough North Station into a vibrant community hub. Volunteers created Reg's Garden, an accessible space featuring native planting, seating, a community food garden, composting areas and bee hives, alongside new noticeboards, bins and student designed safety messaging. They also renovated the old station master's house into a welcoming Warm Café, now used by a wide range of local groups including U3A, Scouts, walking groups and wellbeing programmes.



These efforts have turned the station into a lively, inclusive centre where people come together to socialise, volunteer and connect with nature. Regular activities, guided walks and growing community use have strengthened local pride, increased social connection and empowered residents of all ages to play an active role in their station. Through strong engagement and collaboration, the garden and station house at Farnborough North have become an integral part of the wider community, providing a lively shared space for all ages.



Tourism & Leisure Award

Sponsored by **TRANSPENNINE EXPRESS**

This category celebrates creative campaigns and events that inspire sustainable days out, support local economies, and encourage visitors to travel by train. Winning projects clearly demonstrate how they encouraged people to explore by train, with judges giving extra credit for strong partnerships with local businesses or attractions and for championing green, responsible travel.

Shortlist

- Clitheroe Line CRP, Forest of Bowland National Landscape & Lancashire County Council - EcoEscapes: Tracks to Trails
- Kent CRP, Kent Downs National Landscape, Kent CC, Explore Kent and Southeastern - North Downs Way Trail by Rail
- Gloucestershire CRP - Greener Gloucestershire
- Severnside CRP - Gromit Unleashed 3, Car Free
- Leeds-Morecambe CRP - Grand Days Out on the Bentham Line
- South East Lancashire CRP - Beacons of Bolton

FIRST

Devon & Cornwall Rail Partnership for More Time in Looe

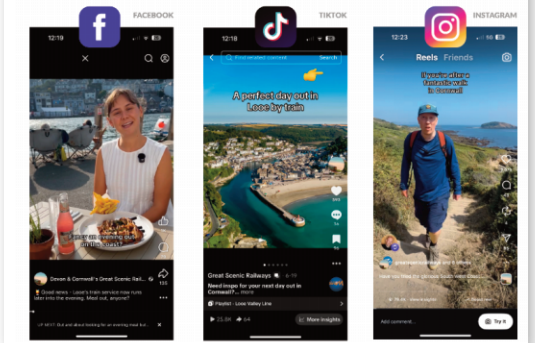
This standout project transformed the Looe Valley Line's timetable through close collaboration between community rail and the local tourism sector. Prompted by feedback from a local hotelier, the Devon & Cornwall Rail Partnership and Great Western Railway delivered faster journeys and better connections, cutting travel times from Plymouth by up to 20 minutes.

A vibrant promotional campaign followed, created with tourism partners and sharing themes of quicker journeys, coastal walks, evenings out and local heritage. Nearly 50 social posts reached 1.2 million people and generated 17,000 likes, boosted by support from major regional tourism accounts.

The impact was exceptional: over 60,000 journeys have been made since the launch, delivering the line's busiest summer on record and putting 2025 firmly on course to be its most successful year ever. It's a powerful example of how community rail, driven by local insight, can deliver real growth and lasting benefit for the places it serves.



Social media posts



"A creative, multi-themed approach that successfully drives increased passenger use along this much-loved line." Peter Roberts, judge

Tourism & Leisure Award

SECOND

Heart of Wales Line Community Rail Partnership for Make and Trade

This initiative was developed to showcase and connect more than 100 independent makers, producers and attractions along the scenic railway between Swansea and Shrewsbury. Central to the project was Goods Along the Line, a 48 page directory distributed widely across the route and local tourist hotspots. The partnership also hosted a networking event and marketing masterclass to help participating businesses strengthen skills and visibility.



The project has already guided thousands of visitors along the line, with over 6,000 booklets in circulation, social media reaching more than 500,000 people, and community events generating over £1,000 in direct sales for local makers. Businesses have reported new customers, stronger community links and shared learning. With plans to refresh the brochure annually through advertising and sponsorship, the project will continue to support rural economies while promoting sustainable travel on the Heart of Wales Line.



THIRD

Southeast Communities Rail Partnership, Horsham District Council and Whistlestop Arts for The Arun Valley Line: Beyond the Rails Podcast and Films

Horsham District Council, Southeast Communities Rail Partnership and Whistlestop Arts created a new audio visual guide to promote sustainable rail travel and celebrate the people who make the Arun Valley Line welcoming. Podcasts, reels and a feature film showcased attractions along the route, supported by strong marketing from Govia Thameslink Railway, Gatwick Airport and local tourism partners.



The launch generated wide press and social media reach, with hundreds of podcast downloads, YouTube views and webpage visits, each boosted by further posts. QR coded promotional cards helped travellers access the content easily, and feedback from visitors and tourism forums has been highly positive. The project's success has resulted in securing funding for a second series covering six more stations in 2026, extending its legacy and expanding its regional reach.



Photo Competition | Best Image Capturing the Essence of Community Rail

Sponsored by



Our photo competition celebrates the beauty, spirit and diversity of community rail through the lens. After our judges selected their standout favourites, the final decision was handed to the public, and the response was incredible. Nearly 2,000 votes were cast across the shortlisted entries, demonstrating the real passion and pride these photographs sparked.

Shortlist

1. Darent Valley CRP - Amazing group collaboration for the Darent Valley Line community!
2. Heart of England CRP & The Life Path Trust - Enthusiasm! Always full to the brim with our Coventry Adopters!
3. Heart of Wales CRP - Let's get ready to ramble!
4. Gloucestershire CRP - Funny faces on the train
5. TransWilts CRP - Picture power at Pewsey
6. Cam Valley CRP - How do you like the new banner?
7. Beds & Herts CRP - Wait for my signal...
8. Barton Lions - Keeping it in the family!
9. Leeds Morecombe CRP - High Five!



Photo Competition | Best Image Capturing the Essence of Community Rail

FIRST

Friends of Brighouse Station for Brighouse Busy Lizzies



Photo Competition | Best Image Capturing the Essence of Community Rail

SECOND

Friends of Altrincham Interchange for Hound Dog Blues on the Altrincham-Chester Music Train



THIRD

Cromford Station Volunteers for Some Might Say



Influencing Positive Change & Sustainability

Sponsored by



NORTHERN

This category recognises community rail initiatives that demonstrate forward looking, sustainable and inclusive approaches to local development. It highlights effective partnership working that encourages climate aware thinking, supports resilient and cohesive communities, and aligns with the principles of the UN Sustainable Development Goals. Above all, it celebrates projects that strengthen local environments and community wellbeing while creating a meaningful legacy for future generations.

Shortlist

- Greening Arundel and the Green Team with partners - A Big Green Welcome to Arundel Event
- Gloucestershire CRP - Access to Nature
- Robin Hood Line CRP and Station Adopters with EMR and Derbyshire Wildlife Trust - Biodiversity at Hucknall Station
- New Pioneers Project - Men's Lab
- Settle Carlisle Railway Development Company - Settle Carlisle Refreshment Trolley Service

FIRST

Community Rail Lancashire and Lancashire Archives for The English Queen

Community Rail Lancashire used two major rail anniversaries (50 years since Queen Elizabeth II opened the electrified West Coast Main Line at Preston, and Railway 200) to inspire young people about heritage, sustainability and greener travel. Working with Lancashire Archives and Preston Station, they created hands on experiences for Key Stage 2 pupils, from guided station tours to immersive workshops exploring how the railway has evolved from steam to electrification and what that means for a greener future.

Lasting resources, including an 'I Spy' station booklet, exhibition materials and school packs, ensured the project's impact extended well beyond the workshops. More than 100 pupils from diverse backgrounds took part, with the content proving suitable for use across all of Key Stage 2. Schools have already requested further sustainability sessions, and the workshops are now a permanent part of Lancashire Archives' education programme, a clear sign of the project's success and lasting legacy.



"I really liked this initiative which linked to messages on the importance of travelling sustainably with others of history and practical familiarisation with the railway. I also liked that the concept was piloted, lessons learned were clearly documented and follow up activity is planned for the future." Nicky Forsdike, judge

Influencing Positive Change & Sustainability

SECOND

Sevenside Community Rail Partnership, Great Western Railway and Bridgwater Safeguarding Partnership Group for Resilient Futures: Bridgwater Safeguarding Response

In summer 2024, youth antisocial behaviour at Bridgwater Station escalated into dangerous incidents, putting young people, staff and passengers at risk. With many of the children vulnerable, Great Western Railway and Sevenside Community Rail Partnership coordinated a response involving more than 20 partners, including Network Rail, British Transport Police, youth services and local authorities.



Interventions included visits to a Pupil Referral Unit, early intervention workshops for 11–12 year olds, community engagement days and a contextual safeguarding assessment by Railway Children. Staff also shifted to a relationship based approach to build trust. Within a year, youth related incidents fell from an average of 22 a month to just 7, staff confidence improved, and young people began engaging more positively. The work has also created a lasting legacy with the development of a Bold & Brave café at the station to provide hands on skills and employment pathways, demonstrating the transformative power of early intervention, collaboration and community focused rail.



THIRD

Glenfinnan Station Museum Trust for Glenfinnan Solar Snowplough Exhibition

Glenfinnan Station Museum Trust transformed a 1936 railway snowplough into the Solar Snowplough, a solar powered exhibition designed to turn long visitor waiting times into meaningful climate engagement. Inside, visitors discover historic objects and a short film on extreme weather, while an outdoor panel links past snow clearing efforts with today's flooding and landslip challenges on the West Highland Line. The entire display runs on solar power generated from reused materials, modelling sustainability in action.



Since opening in May 2025, the exhibition has been activated 2,524 times, received an estimated 5,000 visitors, and increased the museum's reach by around 20%, especially during steam train stops. Widely praised for its creativity and climate leadership, the Solar Snowplough offers a memorable reminder that rail travel plays a vital role in a low carbon future.

Most Enhanced Railway Spaces

10

Sponsored by **greateranglia**

This category celebrates projects that have transformed disused or underused railway buildings and land into vibrant, valued community spaces. It shines a light on initiatives that rejuvenate or repurpose railway assets in creative, meaningful ways that deliver real social value.

The entries shortlisted here have effectively involved local people, responded to community needs, and put strong plans in place to ensure their revitalised spaces continue to benefit the community for years to come.

Shortlist

- Ambergate Adopters - Ambergate Station and Community Garden
- Friends of March Railway Station - March Station Improvements

FIRST

Friends of Birkdale Station for Birkdale Station Master's House Community Hub and Library

The Friends of Birkdale Station began their journey by transforming the disused Station Master's House into a much needed community library after the local council facility closed in 2013. This initial restoration laid the foundations for a thriving community hub, which opened its doors in 2021 and quickly became a central, much-loved space in Birkdale Village.

In recent years, the group's impact has grown significantly. Now made up of more than 60 volunteers, the Friends run every aspect of the library's day to day operations and continually expand what the hub offers local people. Their work now goes far beyond maintaining a building: they manage over 5,000 books, oversee three community meeting rooms, including a free-to-use computer suite, and deliver a wide and inclusive programme of activities.

The Friends' commitment to reinvesting every penny and continually expanding their offer has kept the hub vibrant, relevant, and deeply rooted in the community's evolving needs. Judges recognised their outstanding, volunteer led dedication, praising how they've not only transformed a neglected station building but sustained its growth into a dynamic, inclusive asset that enriches local life year after year.



"Definitely a great re-use of a redundant space for ongoing community benefit." Daniel Wright, judge

Most Enhanced Railway Spaces

10

SECOND

Tyne Valley Community Rail Partnership for Celebrating Haltwhistle

Tyne Valley Community Rail Partnership has spent over eight years transforming Haltwhistle Station into a vibrant gateway for visitors to Hadrian's Wall. After restoring the Old Booking Hall for community use, the partnership brought long derelict buildings back into life.

The waiting rooms are now bright exhibition spaces, and a monthly makers' market on the forecourt boosts local food and craft businesses. The Water Tower has become a cosy café, creating seven part time jobs and using herbs grown in the station planters. Four new affordable workspaces now house local organisations, with rental income reinvested into CRP projects.

These improvements have revitalised the station and strengthened the town's economy, earning Haltwhistle national attention during Community Rail Week as a model of how station regeneration can benefit an entire community. The development of the station, led by the CRP, has turned it into a lively community hub, bringing people together, supporting local livelihoods, and transforming Haltwhistle into a place residents are proud of and visitors remember.



THIRD

Essex & South Suffolk Community Rail Partnership for Harwich Town Community Garden

Essex & South Suffolk Community Rail Partnership transformed a neglected car park beside Harwich Town Station into a welcoming, accessible community garden for the Railway 200 celebrations. What was once an unused space now features wheelchair friendly planters, seating and heritage displays, with local schools, refugee and migrant groups, and families facing hardship all helping to design and plant the garden. The station house façade was also restored, replacing old boarding with vibrant panels celebrating 200 years of Harwich's rail history.

The project has created a lively community hub that boosts wellbeing, strengthens local relationships and brings new life to the station, showing how community rail can revitalise places, support inclusion and deliver lasting benefits for local people.



It's Your Station

11

Sponsored by  Merseyrail

This category celebrates the volunteers bringing stations to life, strengthening community connections, enhancing biodiversity, and creating welcoming, uplifting spaces for passengers and local people.

These volunteer led efforts often transform stations into valued community hubs, improving wellbeing, supporting local pride, and showcasing the positive impact that community rail can have on both people and place.

Platinum shortlist

- Friends of Buxton Station
- Friends of Glossop Station
- Friends of Goostrey Station

PLATINUM

Friends of Hindley Station

The Friends of Hindley Station have continued to set the benchmark for community rail. Their year-round commitment to education, sustainability, and creativity is exceptional, from 'try the train' trips and biodiversity projects with youth groups and Scouts, to planting pollinator-friendly gardens, harvesting rainwater, building wildlife habitats, and even starting a community orchard.

Their fundraising, community talks, rail trail support, and striking new artworks, including a mural and shelter panels created with 200 local children, show how deeply they root the station in local pride and participation.

What truly elevates the group and resonated strongly with judges, is the depth of their social impact. Their flourishing partnership with Thrive, a local community interest company, creates meaningful, confidence building opportunities for adults with learning difficulties. It's a powerful example of how the Friends of Hindley Station, though small in number, consistently deliver extraordinary, far reaching benefits for passengers and the wider community.



"Another tour de force from Hindley. The integration of community, gardening and art/heritage is brilliant. And all done during electrification work. Turning adversity into triumph." Mark Barker, judge

It's Your Station

11

Gold shortlist

- Market Rasen Station Adoption Group
- Friends of Gordon Hill Station
- Lowestoft Central Project
- Hockley Station Adopters
- Grow Feral - Weston Super Mare
- Maghull Station Volunteers
- Coöperatie Stationspark Deurne
- Bridlington Station Adopters
- Greening Arundel, the Green Team & multiple partners
- Otford Station Volunteers

GOLD

Friends of Kents Bank Station & Foreshore

Since forming in 2015, the Friends of Kents Bank Station & Foreshore have transformed their station into a welcoming, heritage-rich space. They've revived its Victorian character through restored information boards, replica Furness Railway benches, and creative engagement like the book exchange and 'Poetry on the Platform'. Their clear, consistent communication has built strong connections with residents, visitors and passengers.

The group's wildlife-friendly gardens and popular annual Community Fête have turned the once neglected station into a thriving community hub. This blend of heritage preservation, environmental care and outstanding local engagement is exactly why they stood out as a Gold-winning group.



"A well organised and beautifully presented planting project that sparked friendly competition within the group, resulting in a wonderfully diverse display. It shows great respect for both heritage and the natural environment, especially given the challenges of the Morecambe Bay foreshore. The station has truly become a thriving community hub." Mark Barker, judge

It's Your Station

11

Silver shortlist

- Great Coates In Bloom
- Belper Station Adopters
- Ambergate Station Adopters
- Keynsham In Bloom
- Stone Station Adopters
- Hoylake & Meols in Bloom Station Partnership
- Birkdale Civic Society & Birkdale Station
- Bebington Merseyrail in Bloom
- Spital Station Volunteers
- Fazakerley Wombles
- Meols Station In Bloom Partnership
- Friends of St. Michaels Station
- Ainsdale Station - Merseyrail in Bloom Partnership
- Friends of Cark Station
- Friends of Hale Station
- Church and Oswaldtwistle Station
- Cottingham Station
- Appleby Station Volunteers
- Friends of Cononley Station
- Friends of Chapel-en-le-Frith Station
- Friends of Ore Station

SILVER

Edale Station Friends

Since 2017, the Edale Station Friends have brought warmth and energy to their station through creative, community focused projects. From 'try the train' trips for asylum seekers to bumblebee safaris and partnerships with local businesses, they keep people engaged and informed, supported by regular updates on the station noticeboard and in the Parish magazine.

The group's commitment to sustainability and heritage made them stand out as Silver winners. Their Railway 200 makeover, repainting key features in the original Midland Red and Cream and hosting a celebratory event with art, archives and film, further showcased their pride in the station's history and community.



"A group making a genuine difference to the Hope Valley and its community, championing the sensitive restoration of local heritage while delivering clear, lasting benefits for the area." Paul Bigland, judge

It's Your Station

11

Bronze shortlist

- Blythe Bridge Station Adoption Group
- Matlock Station Adopters
- Habrough & Ulceby Station Adopters
- Friends of Mansfield
- Orrell Park Regeneration Group Partnership
- Friends of Beverley Station
- Hutton Cranswick in Bloom

BRONZE

Open Orchard Project – West Norwood Station

Open Orchard have transformed West Norwood Station by turning a neglected corner of Platform 2 into a bright, pollinator friendly garden that lifts the whole station. Volunteers reshaped the ground, created wildlife habitats and planted drought tolerant flowers, herbs and a crab apple tree, bringing colour and life to a once forgotten space.

Judges recognised the group for showing how a small but committed team can make a meaningful impact across the station. Their ongoing care, community involvement and passion for improving the environment exemplify the spirit of community rail.



"A fantastic example of thoughtful reclamation, turning overlooked space into something valuable and full of character."
Paul Bigland, judge

Railway 200 Legacy Award

12

Sponsored by



This special one-off award celebrates standout community rail projects created for Railway 200, initiatives that honoured the past, enriched the present, and inspired the future of Britain's railways.

Judges looked for imaginative ways groups connected communities with the railway across the four themes of skills and education; innovation and the environment; heritage, culture and tourism; and celebrating railway people.

Entries were judged within three group sizes, large, medium and small, to recognise excellence fairly across different levels of resources and capacity.

Shortlist

Large group shortlist

- Community Rail Lancashire and Girl Guiding North East England - The Railway Challenge Badge
- Essex and South Suffolk CRP - 200 Years of Train Travel Since 1825
- Gare Du Nord Theatre & Avanti West Coast - Railway 200: The Show
- Kent CRP - History, Heritage and Creative Celebration on the Isle of Sheppey
- Community Rail Lancashire - 200 Stories of Railway Pride
- Gloucestershire CRP - Beyond the Platform

Medium group shortlist

- Bishop Line CRP & Citizen Songwriters - Storylines
- Devon & Cornwall Rail Partnership - Fantastic Facts from Devon & Cornwall's Railways
- Yorkshire Coast CRP - Old Parcels Offices Artspace: Railway 200 Heritage Exhibition
- Yorkshire Coast CRP - Celebration of the Longest Station Seat
- White Cliffs CRP, Southeastern & Southern Electric Group - Dover Priory 164th Birthday and Community Rail Day
- Mid-Cheshire CRP - Railway 200 Celebrations
- Blackmore Vale Line CRP - Postcards From First Class Destinations

Small group shortlist

- Micheldever Station Adopters - Commemorating 185 Years of the London to Southampton Line
- Friends of Bentham Station - Double Celebration: Bentham Station 175 and Railway 200
- Friends of Buxton Station - Legacy Includes Past, Present and Future: FoBS Celebrated Each Part
- Friends Of Bishopstone Station CIC - The Five Thirty-Seven: Driver Pattenden
- Friends of Altrincham Interchange - Railway 200 at Altrincham Interchange
- Friends of Goostrey Station - Goostrey Village Celebrates The Railway Bicentenary
- Friends of New Milton Station - New Milton Railway 200 History Mural

Railway 200 Legacy Award

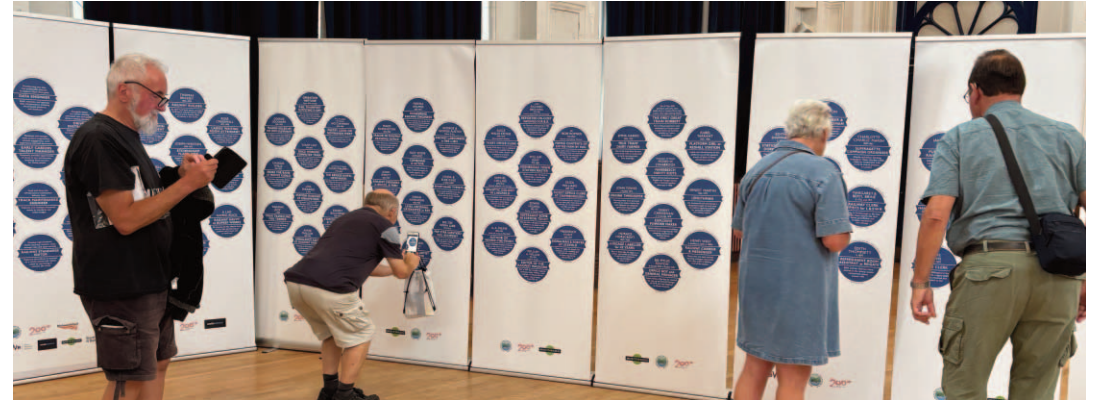
12

LARGE GROUP

Southeast Communities Rail Partnership for 200 Blue Plaques

Southeast Communities Rail Partnership marked Railway 200 with an ambitious legacy project: creating 200 blue plaques that bring railway history and modern railway careers to life. Working with historians, researchers and local communities, the CRP uncovered stories across its 10 lines - 100 plaques celebrating notable people, places and moments from railway heritage, and 100 showcasing the variety of careers available today.

Unveiled at stations and community events throughout the year, the plaques form a permanent trail that connects passengers with the railway's past while inspiring future generations to consider a career in rail. This lasting installation strengthens local pride, boosts engagement with stations, and ensures Railway 200's spirit continues well beyond the anniversary year.



"A creative, visual and well thought through project clearly supporting all the Railway 200 themes. A huge amount of partnership work was undertaken to make the concept a reality and a very fitting way to mark and celebrate the 200th anniversary." Emma Roberts, judge

Railway 200 Legacy Award

12

MEDIUM GROUP

Tyne Valley Community Rail Partnership for A Song for Edmondson

Tyne Valley CRP marked Railway 200 with a creative project that brought local railway history to life through music. Working with singer songwriters Gareth and Bronwen Davies Jones, they helped pupils from two primary schools write and record original songs inspired by Brampton Station and Thomas Edmondson, the pioneering 1830s stationmaster who revolutionised railway ticketing. The children also enjoyed new experiences, from learning sound engineering skills to taking a train trip to see original Edmondson tickets in Haltwhistle.



The project boosted pupils' confidence, creativity and understanding of their local heritage, leaving a legacy that will last long beyond the anniversary year. Tyne Valley CRP has since applied for a blue plaque in Edmondson's honour and is developing a follow on heritage project with the local secondary school, ensuring his story, and the area's rich railway history, continues to inspire future generations.



"A huge amount of time and effort went into this and seeing the children delighted with their performance was a real treat - and what I had hoped Railway 200 would do."
Emma Roberts, judge

SMALL GROUP

Motspur Park Station Adopters for Motspur Park 100

Motspur Park's station adopters marked the station's centenary and Railway 200 with a vibrant two day celebration that brought local history and community spirit together. Residents, schools and community groups enjoyed talks, heritage displays, a 1925 themed model railway and a packed community picnic, supported by volunteers who also produced commemorative materials to mark the occasion.



At the heart of the event was the Community Bunting Project, which saw over 70 people create more than 800 metres of upcycled bunting decorated with memories and local stories—later



displayed across the station, library and park. With almost 1,000 visitors on day one, the celebration strengthened local connections, boosted pride in the area's railway heritage, and demonstrated the powerful role volunteers play in shaping a more engaged and connected community.

"The volunteers very successfully pulled together so many elements to mark both the station's centenary and Railway 200, creating a lot of love for the station and the railway in the process." Mike Lamport, judge

Outstanding Volunteer Contribution

13

Sponsored by CROSSCOUNTRY

This category celebrates the remarkable individuals whose dedication, passion and hard work make community rail thrive.

It shines a spotlight on volunteers who give their time to support stations, lines and local communities, whether through consistent, long term commitment or by going above and beyond over the past year. These are the people who bring projects to life, strengthen community connections and make a real, lasting difference.

Shortlist

- Marc Wade - Whitwell Station
- Roger Gaitley - Bridlington volunteer
- Peter Lynch - Ambergate Community Garden Coordinator
- Derek Beer - Blackmore Vale Line CRP
- Janet Benzie – Friends of Settle Carlisle Line, Ribbleshead Cafe

FIRST

Dominic Noades – Kent Community Rail Partnership

Since joining Kent Community Rail Partnership at just eighteen, Dominic Noades has become an invaluable volunteer whose enthusiasm, knowledge and commitment have transformed the partnership's work. Over the past year he has supported more than a dozen events from guided walks and station gardening to running stalls and maintaining community noticeboards, always bringing energy and an impressive depth of rail expertise.

His photography, research and social media activity have significantly boosted the visibility of Kent CRP, helping to promote sustainable travel, highlight scenic days out, and showcase the communities along the lines.

Dominic's dedication has had a lasting impact not only on Kent CRP's outreach and engagement, but on the people around him. His confidence has grown immensely, evolving from initial nerves to becoming a warm, knowledgeable ambassador for community rail. His contributions continue to strengthen local pride, inspire rail users, and demonstrate the powerful difference that passionate young volunteers can make.



"If you were to snap Dominic in two, like a stick of rock, you would find 'community rail advocate' written all the way through – he truly embodies the spirit of community rail." Gary Outram, Project Officer for Kent CRP

Outstanding Volunteer Contribution

13

SECOND

Sandy Burn – Friends of Westerfield Station

Sandy Burn has been the heart of Westerfield Station, transforming it into a colourful, wildlife friendly space through her creativity, enthusiasm and dedication. Her planting, events and award winning displays have made the station a joyful place for both people and nature.



Sandy's ideas, from Bee Fêtes to her much loved Christmas decoration activities, have brought the community together year after year. She has warmly welcomed Scouts, refugee families and neurodiverse groups, ensuring everyone feels valued and included. A highlight was Westerfield's appearance on BBC Gardeners' World, which drew visitors from across the country and showcased the impact of her work.



"Sandy is a shining example of what a community rail volunteer can bring to our stations: passion, creativity, inclusivity and joy. Westerfield has been lucky to have her, and her contribution will continue to ripple out across the East Suffolk Lines and beyond." Thalia Woodgate, East Suffolk Lines Community Rail Partnership

THIRD

David Gibson - Witham, Cressing and Braintree Freeport stations

David Gibson has been a dedicated station adopter for nearly four years, transforming Witham, Cressing and Braintree Freeport stations through creative planting, careful maintenance and sustainable watering solutions. He also supports new adopters, offering guidance and encouragement, and regularly contributes to wider community rail projects such as installing artwork and taking part in outreach during Community Rail Week.



For Railway 200, David created a children's book about local railway history, running workshops in three primary schools to inspire pupils and gather their illustrations. The book received national press attention and boosted engagement with the area's rail heritage.



"David's creativity, leadership and unwavering dedication exemplify the highest standards of volunteerism, making him a truly outstanding nominee for this award." June Povey, Essex & South Suffolk Community Rail Partnership

Community Rail Network Board's Special Recognition Award

14

This prestigious award honours individuals who have made an exceptional, long standing contribution to community rail.

It celebrates those whose dedication, leadership or advocacy has strengthened partnerships, inspired others, and helped community rail flourish over many years.

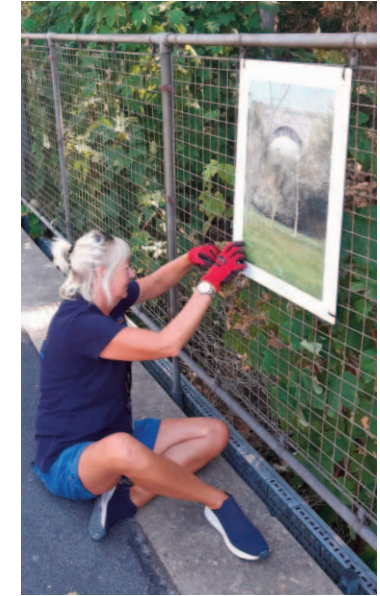
Carefully deliberated on by Community Rail Network's board members, this award recognises those whose efforts go above and beyond and leave a lasting legacy for communities and the wider railway.

AWARDED TO

Jayne Sumner – Essex & South Suffolk Community Rail Partnership

Jayne Sumner retired in December 2025 after 15 years leading Essex & South Suffolk Community Rail Partnership, during which time she transformed the partnership into a national exemplar, becoming the first CRP to gain Department for Transport accreditation in 2019 and later winning a team Outstanding Achievement Award in 2022. Her leadership brought defibrillators to stations, inspired countless community events, and ensured rail was welcoming and accessible for all.

Jayne's energy and creativity strengthened a vibrant network of station adopters across 42 stations, turning them into colourful, community focused spaces. One of her final achievements, a 45 page Railway 200 commemorative book created with schools and volunteers, captured her passion for sharing heritage and connecting people. Jayne continues to contribute to community rail as an adopter at the new Beaulieu Park Station. Her legacy is unmistakable: stronger communities, brighter stations, and a partnership defined by warmth, inclusivity and joy.



Outstanding Contribution to Community Rail

15

Sponsored by **southeastern**

This award celebrates truly exceptional impact within community rail.

Each year, Community Rail Network's senior leadership team selects one community rail partnership and one station adoption group that, in their view, have delivered an outstanding contribution over the past 12 months.

These awards recognise exemplary dedication, innovation and influence, work that not only strengthens community rail, but sets a benchmark for others to aspire to.

AWARDED TO

Farnborough Street Residents Association

Over just four years, the Farnborough Street Residents Association has transformed Farnborough North into a thriving community asset. Through their dedication, they turned the stationmaster's garden into Reg's Garden, a fully accessible, nature rich space that offers comfort, colour and calm for passengers, students and local residents. With features like bee hives, food growing areas, safety messaging created with young people and essential facilities such as a noticeboard and defibrillator, they have made the station safer, more welcoming and deeply rooted in the community.

Their work on the adjacent station house, now a thriving community hub used by local groups and new volunteers, has strengthened social connection and created a warm, inclusive place for people to gather. Together, the garden and hub stand as a lasting legacy of what determined volunteers can achieve, turning an unstaffed station into a vibrant, proud and people centred space that continues to enrich the whole community.



Outstanding Contribution to Community Rail

AWARDED TO

Yorkshire Coast Community Rail Partnership

For nearly three decades, Yorkshire Coast CRP has been a driving force for community connection, heritage pride and confident rail use along the coast. In 2025, the partnership delivered another standout year—running events that made stations welcoming hubs, supporting young people to travel safely, and creating fun, interactive ways for families to explore railways. Their unwavering support for station adopters has transformed stations into celebrated community spaces, while heritage projects like the Barrow Boys sculpture and book have preserved local stories for future generations.

Their most memorable achievement came with a moment of railway history: bringing together 239 people on the world's longest station bench to mark Railway 200, an unforgettable celebration that captured national and international media attention. Through everything they do, from guiding first time travellers to inspiring pride in local rail heritage, Yorkshire Coast CRP continues to leave a powerful legacy of connection, creativity and community spirit.



Thank you to this year's sponsors, donors & partners



Noddir gan/Sponsored by
TRAFNIDIAETH CYMRU
TRANSPORT FOR WALES



Get in touch with us to explore partnership, sponsorship,
and engagement opportunities for future Community Rail Awards
events@communityrail.org.uk | www.communityrail.org.uk/awards

